

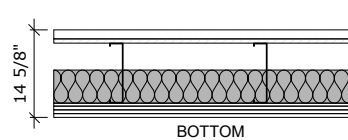
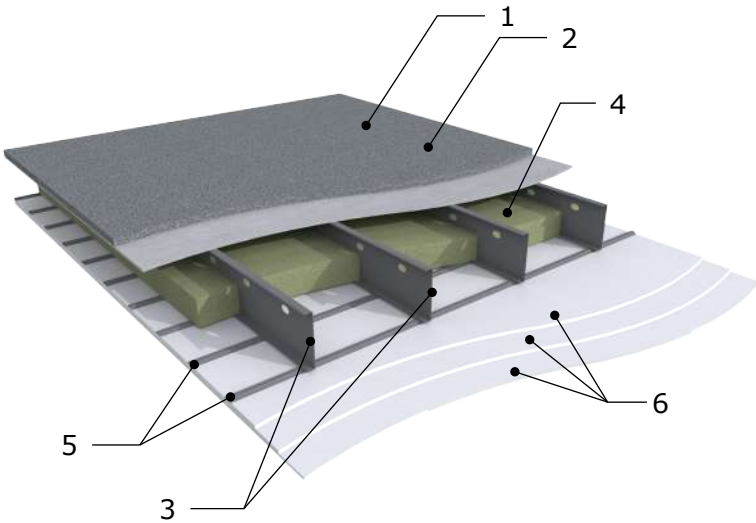


**Fire Rated Assembly: B-016**

2 Hour Fire Rated Construction  
QAI Certified and Listed

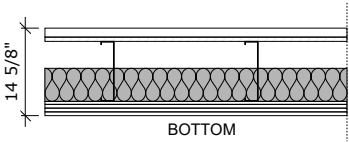
**Whole Assembly Performance**

R-32; T-Bridge 5 of 10; STC 58



**Assembly Details:**

1. Optional 1.5" Gypcrete
2. 18mm MEGCRETe Sheathing
3. Steel Joists 10" x 2" - 16 Gauge @ 24" OC
4. 140mm Fiberglass Insulation - Classified as Non-Combustible (ASTM E136 or CAN ULC S114)
5. 25 MSG Galv. Steel 1/2" Deep @ 12" OC
6. 3 Layers 5/8" Type X Gypsum

Type Mark	Visual	Details	Description
B-016		<p><b>SHLD FRA B-016</b> 2 Hour Fire Rated Construction QAI Certified and Listed</p> <p><b>Whole Assembly Performance</b> R-32; T-Bridge 5 of 10; STC 58 (Interpolated)</p>	<ul style="list-style-type: none"> <li>- Optional 1.5" Gypcrete</li> <li>- 18mm MEGCRETe Sheathing</li> <li>- Steel Joists 10" x 2" - 16 Gauge @ 24" OC</li> <li>- 140mm Fiberglass Insulation - Classified as Non-Combustible (ASTM E136 or CAN ULC S114)</li> <li>- 25 MSG Galv. Steel 1/2" Deep @ 12" OC</li> <li>- 3 Layers 5/8" Type X Gypsum</li> </ul>